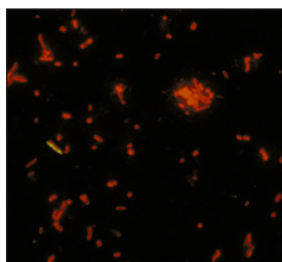


Electrophoresis Dyes & Stains

Acridine orange, C.I. 46005, very high purity

Cat. # 04539

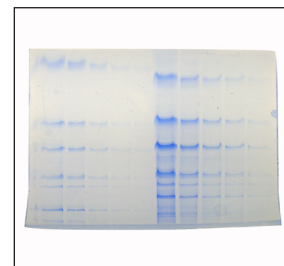
A grade of acridine orange of exceptionally high purity, suitable for quantitative work. Detection of nucleic acids separated by gel electrophoresis. DNA intercalating dye. Free of inorganic salts. This is also used as a specific stain for RNA, using a 2% solution containing 1% lanthanum acetate in 15% acetic acid.



Coomassie® Blue G250, C.I. 42655

Cat. # 03707

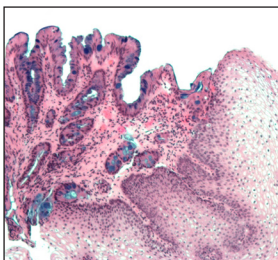
Protein stain for SDS gels. Used in dye binding techniques for protein quantification.



Alcian Blue 8GX, C.I. 74240

Cat. # 19175

Used in electrophoresis for detecting glycoproteins and other research needs.



Ethidium Bromide

Cat. # 04033

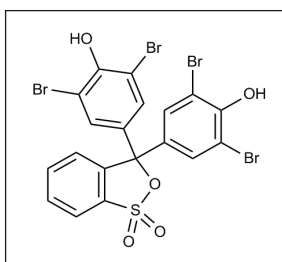
Intercalates double-stranded nucleic acids; frameshift mutagen; fluorescent stain for nucleic acids in electrophoresis; used for DNA quantitation.



Bromophenol Blue, ACS

Cat. # 24995

Bromophenol Blue is useful as an acid-base indicator, a color marker and a dye. As an acid-base indicator its range lies between pH 3.0 and 4.6. Suitable as a color marker in agarose gel electrophoresis and polyacrylamide gel electrophoresis and commonly used as a dye to stain proteins in slides.



Pyronin Y, C.I. 45005, Certified

Cat. # 18614

Used in combination with methyl green for the selective and differential staining of nucleic acids. The pyronin Y stains RNA red, while the methyl green stains DNA green. The combined methyl green-pyronin Y stain is a useful histochemical reagent. Pyronin Y can also be used as a tracking dye for polyacrylamide gel electrophoresis.



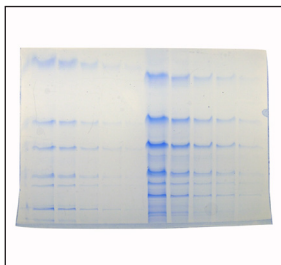
stains on back

Electrophoresis Dyes & Stains

Poly G Blue, Ready-to-Use Stain

Cat. # 24609

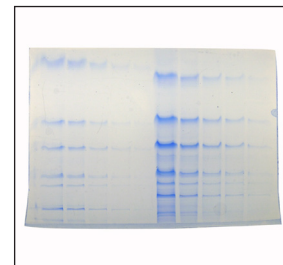
Poly G Blue is a ready-to-use Coomassie® G250 blue stain solution for protein electrophoresis staining applications. Our ready-to-use format eliminates the exposure to potentially irritating powdered dyes.



Poly R Blue, Ready-to-Use Stain

Cat. # 24608

Poly R Blue is a ready-to-use Coomassie® R250 blue stain solution for protein electrophoresis staining applications. Our ready-to-use format eliminates the exposure to potentially irritating powdered dyes.



GlycoGel Stain Kit

Cat. # 24693

Glycoproteins are macromolecules composed of both a protein and carbohydrate portion. Glycoprotein detection in gel electrophoresis (PAGE) is performed by modified (PAS) Periodic Acid Schiff chemistry. This method is very selective and has a detection limit of approximately 25-100 nanograms/band.

