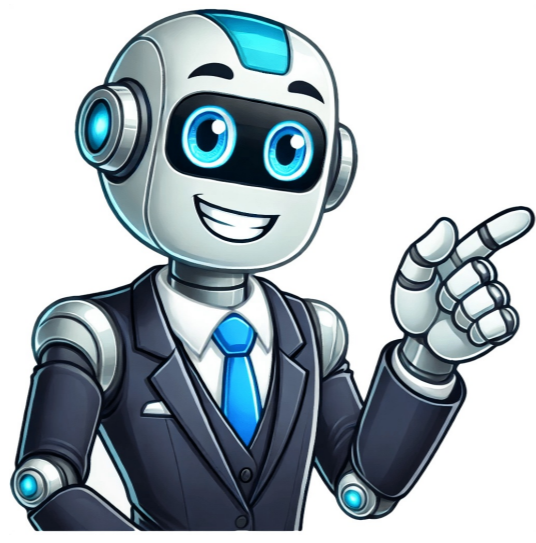


I'm not a bot



IKEA Bed Frame Manuals and Assembly Guide Below, you'll find manuals for various IKEA bed frame models, with 136 total manuals available as of November 26th, 2024. Additionally, our frequently asked questions section offers helpful tips on using your product. If your model is not listed or if you encounter issues with assembly, please contact us. We also recommend visiting a Repair Café for free repair services if your product is defective and the manual doesn't provide a solution. Frequently Asked Questions Our support team works to gather useful product information and answers to common questions. If you spot any inaccuracies in our FAQs, kindly let us know through our contact form. Some valuable tips from IKEA users include: * To disassemble their products effectively, follow the instructions in reverse order. * Many IKEA stores offer free screws, plugs, and fixings for customers to use. * When removing dowels, use pliers with light pressure to avoid damaging them. IKEA bed frames often utilize the SKORVA midbeam, which can be purchased separately. For optimal comfort, mattresses should be at least 16cm thick. Additionally, it's not possible to use a double mattress on an individually slatted bed base or with a double mattress topper due to height differences. A bed frame primarily serves as a support for the mattress, whereas a box spring provides additional ventilation and weight distribution by using metal coils. Wooden bed frames tend to be sturdier than metal ones, requiring more frequent tightening of screws and checks on strength. For assembly assistance, consider TaskRabbit's services or refer to our user manual available in PDF format.

[Ikea sultan lade bed frame manual](#). [Ikea lade bed frame instructions](#). [Ikea sultan lade bed instructions](#). [Ikea sultan lade bed frame assembly instructions](#). [Ikea sultan bed frame instructions](#). [Sultan ikea bed instructions](#). [Sultan lade ikea instructions](#).